

Chair



Chris Moore, Partner, Meredith Connell, Auckland

Chris has 29 years' experience in the areas of commercial and commercial property law, and heads his firm's commercial / commercial property team. He is the current chair of both Meredith Connell's board and the NZLS Property Law Section executive. Chris has presented addresses on commercial property and construction issues at a number of industry and NZLS conferences.

Keynote Speakers



Hon Dr Michael Cullen, Deputy Prime Minister

Dr Cullen has been a member of Parliament since 1981 when he won the seat for St Kilda. His involvement with the finance portfolio dates back to August 1987 when he was appointed Associate Minister of Finance. As well as holding the finance portfolio, Dr Cullen is Minister for Tertiary Education and Leader of the House.



John Key, National Spokesman on Finance

John gained a BCom from the University of Canterbury and launched his investment banking career in New Zealand in the mid 1980s. After 10 years he headed offshore, working in Singapore, New York, London and Sydney for US investment banking giant Merrill Lynch. He became head of global foreign exchange and European bond and derivative trading. In 1999 John was invited to join the Foreign Exchange Committee of the Federal Reserve Bank of New York.

In 2001, he returned to New Zealand and won the Helensville seat for National. He has risen through the ranks to be the Party's finance spokesman and is now ranked at number four.



Deane Purdue, McCullochs Chartered Accountants, Gisborne

Deane passionately believes in educating business people to achieve their business as well as personal goals. A sought-after speaker, he presents each year at seminars and conferences both in New Zealand and Australia on subjects such as succession planning, future-proofing your business, trusts, and marketing.

He was formerly chairman of KPMG's Business Advisory division and is chairman of McCullochs Chartered Accountants, Business Advisers and Educators and general manager of TEO Training Ltd.

Under his "Marketing Magician" brand he delivers business education workshops both in Australia and New Zealand on a wide range of subjects.

Deane is a government appointee to the Tairāwhiti Polytechnic Council. He is a member of the BNZ Farm First Faculty specialising in succession planning and this year he has been appointed to the board of the Australasian Institute of Facilitators.

Speakers



Anna Bordignon, Senior Legal Adviser, Department of Building and Housing, Wellington

Anna commenced practice as a commercial property solicitor with a trans-Tasman law firm. She then moved to London to work for a law firm and subsequently as in-house legal counsel for an international company. On her return to New Zealand she joined the recently established Department of Building and Housing as their Senior Legal Adviser. Anna advises the Department on the implementation of the Building Act 2004 and is the lead adviser on the Unit Titles Act 1972 review and the Residential Tenancies Act 1986 review.



Tony Brighouse, Professional Trust Funds Manager – ASB Bank, Auckland

Tony has been with ASB for 22 years – the last four years spent within the professional services area of business banking. Prior to this, Tony worked in ASB Online where he assisted the development and support of ASB's current suite of internet banking products.

His current role involves the promotion of ASB's real time settlement capabilities to solicitors.



Susan Bright, Senior Associate, Bell Gully, Auckland

Susan is in the commercial property department at Bell Gully, where she is part of the commercial leasing team. She has wide experience in commercial leasing and other commercial property work.



Michelle Burke, Partner, Burke Melrose, Auckland

Michelle specialises in retirement village developments, aged care services and sales and purchases of both villages and rest homes. She advises retirement village operators in all aspects of their development, Securities Act compliance and the Retirement Villages Act 2003. She also advises rest home operators in all aspects of their operations.



Marcus Elliott, Partner, Mortlock McCormack Law, Christchurch

Marcus specialises in civil litigation. He studied law at the University of Sydney and has practised in civil and criminal litigation in Sydney, London and New Zealand. He has an MBA degree. In addition to practising as a lawyer, Marcus regularly delivers seminars on legal issues to corporate clients through the New Zealand Institute of Management.



Cecilia Farrow, Managing Director, Assurance Financial Services Ltd, Auckland

Cecilia joined the financial services industry in 1995 as a broker with Summit Brokers, having previously spent six years in training and development.

In 1998 Cecilia established her own company Assurance Brokers Limited (now Assurance Financial Services Limited), a company specialising in business risk management. Her goal was to build a high-value business based on best practice, systems and procedures and defensible advice.

She is recognised as a leader in the field of business and personal risk management. Numerous groups within the industry have engaged her services, including The Portfolio Group, ANZ, AMP, FPIA and AdviserLink, to provide educational workshops.

She is currently the chairperson of the Auckland branch of FPIA, a board member of the FPIA and on the Insurance College Committee and is completing her Business Diploma at Massey University to attain a qualification as a Chartered Life Underwriter.



Christine Grice, Partner, Harkness Henry, Hamilton

Christine has practised for many years in the areas of commercial, corporate and insolvency dispute resolution. She regularly acts as mediator in disputes and negotiations throughout New Zealand.

Christine holds various board memberships and directorships as well as chairing the Perry Group, a diversified closely held group of companies with interests including quarries, landfills, property developments and entertainment.

Christine is retained by the Institute of Directors to provide training nationally in small to medium enterprises (“SMEs”) and special projects.



Shelley Griffiths, Senior Lecturer – Law Faculty, University of Otago

Shelley is a barrister and solicitor and chartered accountant who practised with an international chartered accountancy firm in taxation and audit before joining the Law Faculty at Otago in 2001.

She researches, teaches and publishes in taxation and capital market regulation. She is the author of the taxation chapter in Peart, Briggs and Henaghan, *Relationship Property on Death* (Brookers, 2004).



Jane Holland, Partner, Bell Gully, Auckland

A member of the property department at Bell Gully, Jane specialises in commercial leasing work and leads the commercial leasing team at Bell Gully. She has extensive experience of commercial property work, both in New Zealand and in the UK.

Jane co-authored the current edition of the *Property Council Retail Lease*.



Gayatri Jaduram, cogswell+jaduram, Auckland

Gayatri specialises in banking and financial services, advising financial institutions, borrowers, receivers and liquidators on all aspects of banking and financial services and insolvency.

She acts on corporate financing, loan portfolio acquisitions, asset financing and consumer credit lending, including drafting finance documentation and procedures for lending programmes.



Tim Jones, Partner, Glaister Ennor, Auckland

The focus of Tim's practice is residential and commercial property work. He also has considerable experience in land transactions and building developments. Tim is a member of the Auckland District Law Society Forms Committee, convener of the NZLS / PLS Land Titles Committee on the Landonline LINZ project, and was formerly a member of both the Auckland District Law Society Property & Business Law Committee and the NZLS CLE Board.



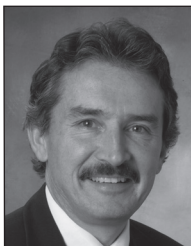
Jonathan Kaye, Partner, Buddle Findlay, Wellington

Jonathan specialises in public law. He has extensive experience working in both the public and private sectors and has been involved in building and housing issues since March 2003. Jonathan has provided a range of advice to the Building Industry Authority, the Ministry of Housing, and, more recently, in respect of the establishment of the Department of Building and Housing and the implementation of the Building Act 2004.



Chris Kelly, Senior Legal Counsel, New Zealand Guardian Trust, Wellington

Chris has nearly 30 years' legal experience as an estates and trust lawyer, including a number of years as a family trusts specialist. As the senior legal counsel at Guardian Trust, he is now responsible for developing in-house legal services. Chris has contributed to several legal texts, including two of the titles in *New Zealand Forms and Precedents* and is co-author of the recently published 6th edition of Garrow and Kelly *Law of Trusts and Trustees*.



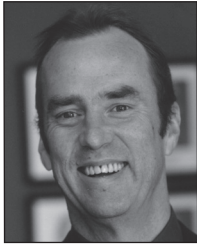
Greg Kelly, Partner, Gillespie Young Watson, Lower Hutt

Greg has 25 years of experience in the wills, trusts and estate area. He is a member of the Wills and Trusts Technical Committee of the NZLS Property Law Section, and a member of STEP. Greg is a contributor to Butterworth's *Law of Trusts*, probate and administration author for *McGechan on Procedure* and co-author of the 6th edition of Garrow and Kelly *Law of Trusts and Trustees*. He has presented papers at a number of seminars and conferences.



Richard McIlraith, Russell McVeagh, Auckland

Richard has been a partner since 1995 and he heads the firm's employment law practice group. He and his team have acted for a large number of major New Zealand corporates in relation to sales and acquisitions and regularly advise on all employment law issues encountered in such transactions.



Rob McInnes, Crengle Shreves & Ratner, Wellington

A substantial part of Rob's practice in the last two decades has comprised advice to financiers on loan and security documents, and credit contracts advice generally. Rob was involved in making submissions to Parliament on the Bill that became the Credit Contracts and Consumer Finance Act 2003, and is involved on an ongoing basis in advising lenders on its implications.



John Mackintosh, Partner, Mackintosh Bradley & Price, Christchurch

John is a partner in the Christchurch firm of Mackintosh Bradley & Price, where businesses and the owners of those businesses are the core clients.

Coupled with a qualification in personal financial planning and a lifetime interest in practice management, his clients' experiences have given him a unique perspective on succession planning for lawyers.



Niamh McMahon, Partner, McMahon Butterworth, Auckland

Niamh began legal practice at a large Auckland law firm in 1987. Her specialty areas of practice include acquisitions, mergers and takeovers, general corporate and commercial advice, insolvency and advising Maori organisations.

She is the convener of the Auckland District Law Society's Forms Committee for 2006 and was substantially involved in the preparation of the Society's third edition of the agreement for sale and purchase of a business, as approved by REINZ



Simon Marks, Partner, Anthony Harper, Christchurch

Simon specialises in retirement village development and securities law. He assisted the Retirement Villages Association of NZ Inc to develop a draft industry standard code of practice for submission to the Minister for consideration under the Retirement Villages Act, and a "one size fits all" plain English occupation right agreement for adoption by RVA member / industry participants under that legislation.



Isabel Mitchell, Partner, Cuningham Taylor, Christchurch

Isabel specialises in family law and deals with issues relating to enduring powers of attorney on a regular basis. As well as acting in relationship property and estate matters, she is a Deputy Lawyer Member of the Mental Health Review Tribunal and was a District Inspector of Mental Health. Isabel also acts as counsel for subject persons pursuant to the Protection of Personal and Property Rights Act 1988.



Andrew Ryan, Partner, Minter Ellison Rudd Watts, Auckland

Andrew has substantial experience in advising clients on a wide range of corporate taxation matters. He specialises in advising clients on cross-border taxation issues, and has a particular interest in trans-Tasman taxation. He also regularly advises clients on the taxation implications of business structuring alternatives, mergers and acquisitions, and on business and capital restructures. Andrew advises some of New Zealand's leading companies and has particular experience in the finance, property and venture capital sectors. He also advises his clients on complex GST issues.



John Stephens, Partner, Meredith Connell, Auckland

John has been involved in the commercial sector in both the UK and New Zealand and acts for private and public companies, institutional investors, developers, fundraising institutions and individuals. John has advised extensively on appropriate commercial structures for new ventures and also advises businesses in relation to restructuring their existing operations and resolving disputes at shareholder and board level. John also advises on company and securities legislation and on the requirements for offshore clients when undertaking business in New Zealand.



Simon Weil, Partner, Morrison Kent, Auckland

Simon has practised for over a decade both internationally and in New Zealand in the field of Trusts and Asset Protection Planning including estate planning, business structuring and Property (Relationships) Act planning. He also has broad experience in the property and general company and commercial fields developed during the past 20 years in international centres including Australia, London and New Zealand. Simon is a member of the Estate and Taxation Planning Council of New Zealand and of the Society of Trust and Estate Practitioners (STEP). He has presented papers for the NZLS, the ADLS, the NZICA and its Trusts Special Interest Group, as well as for legal publishers and various industry groups.



Anne Wilson, Partner, Anderson Lloyd Caudwell, Christchurch

Anne works predominantly in the commercial areas of company structuring, corporate advice, commercial transactions, commercial property, drafting of commercial contracts, transactional banking work, mergers and acquisitions, securities law and listed company advice.

Anne is a regular presenter to the Canterbury Development Corporation's High Tech Launch programme on company structuring. This year, for the third time, she will be a co-presenter of the NZLS workshop *Introduction to Company Law*.

CONTENTS

In session order

Introduction from the Chair	1
Chair: Chris Moore	
Joint ventures	3
John Stephens	
Retirement villages	17
Michelle Burke and Simon Marks	
Tax issues in subdivisions	33
Andrew Ryan	
Banking and securities when purchasing a business – pitfalls for the unwary	55
Gayatri Jaduram and Rob McInnes	
Director, office holder and governance liability	87
Christine Grice	
Compliance with securities – laws for developers	103
Anne Wilson	
Drafting agreements for the sale and purchase of a business – essential things to bear in mind	121
Niamh McMahon	
Employment issues arising in a business sale	133
Richard McIlraith	
Succession and protection planning – the human dimension	143
Deane Purdue	
Legal advice for trustees	165
Chris Kelly and Greg Kelly	
Enduring Powers of Attorney	187
Isabel Mitchell	

Getting out of trouble on a Friday afternoon – the spectrum of remedies for contracts that are going wrong	199
Marcus Elliott and Tim Jones	
What the Building Act means for your client	227
Anna Bordignon	
Building Act issues when buying, selling, or building	245
Jonathan Kaye	
Success.....ion planning for law firms	261
Cecilia Farrow and John Mackintosh	
Commercial leases – thinking outside the square	269
Susan Bright and Jane Holland	
Asset owning structure and inter-generational planning – how to have your cake and eat it too – some tax issues	301
Shelley Griffiths	
Inter-generational asset planning – how to make dough without losing your crust	319
Simon Weil	

TABLE OF CONTENTS

Alphabetical by author

Author		Title	Page
Bordignon	Anna	What the Building Act means for your client	227
Bright	Susan	Commercial leases – thinking outside the square <i>(Joint paper with Jane Holland)</i>	269
Burke	Michelle	Retirement villages <i>(Joint paper with Simon Marks)</i>	17
Elliott	Marcus	Getting out of trouble on a Friday afternoon – the spectrum of remedies for contracts that are going wrong <i>(Joint paper with Tim Jones)</i>	199
Farrow	Cecilia	Success...ion planning for law firms <i>(Joint paper with John Mackintosh)</i>	261
Grice	Christine	Director, office holder and governance liability	87
Griffiths	Shelley	Asset owning structure and inter-generational planning – how to have your cake and eat it too – some tax issues	301
Holland	Jane	Commercial leases – thinking outside the square <i>(Joint paper with Jane Holland)</i>	269
Jaduram	Gayatri	Banking and securities when purchasing a business – pitfalls for the unwary <i>(Joint paper with Rob McInnes)</i>	55
Jones	Tim	Getting out of trouble on a Friday afternoon – the spectrum of remedies for contracts that are going wrong <i>(Joint paper with Marcus Elliott)</i>	199
Kaye	Jonathan	Building Act issues when buying, selling, or building	245
Kelly	Chris	Legal advice for trustees <i>(Joint paper with Greg Kelly)</i>	165

Author		Title	Page
Kelly	Greg	Legal advice for trustees <i>(Joint paper with Chris Kelly)</i>	165
McIlraith	Richard	Employment issues arising in a business sale	133
McInnes	Rob	Banking and securities when purchasing a business – pitfalls for the unwary <i>(Joint paper with Gayatru Jaduram)</i>	55
Mackintosh	John	Success.....ion planning for law firms <i>(Joint paper with Cecilia Farrow)</i>	261
McMahon	Niamh	Drafting agreements for the sale and purchase of a business – essential things to bear in mind	121
Marks	Simon	Retirement villages <i>(Joint paper with Michelle Burke)</i>	17
Mitchell	Isabel	Enduring Powers of Attorney	187
Purdue	Deane	Succession and protection planning – the human dimension	143
Ryan	Andrew	Tax issues in subdivisions	33
Stephens	John	Joint ventures	3
Weil	Simon	Inter-generational asset planning – how to make dough without losing your crust	319
Wilson	Anne	Compliance with securities – laws for developers	103

INTRODUCTION FROM THE CHAIR



“Now, here, you see, it takes all the running you can do, to keep in the same place. If you want to get somewhere else you must run at least twice as fast as that!”

Lewis Carroll 1832-98 “Through the looking-glass” (1872)

It must be accepted by all property lawyers that to stand still will actually put us all well behind. In fact, as Lewis Carroll perceptively recognised, even this sustained effort may not advance our progress.

While this applies to all disciplines, it is particularly relevant to property lawyers. Not only do we have to keep abreast of changes in the law as diverse as securities issues, building and construction and, shortly, the new unit titles legislation, we are also facing, through e-dealing, fundamental technological changes to the ways in which we have traditionally registered our clients’ property interests. This, in turn, brings about changes, and impacts on the way we deal with each other. In addition, we face greater threats from those outside the law as they attempt to make inroads into our traditional practice areas.

So, what is the most effective way to ensure that we are not simply competitive, but rather the outstanding performers in our chosen practice area?

The answer is quite simple, we have to be better informed, technically excellent, practical and commercial to the extent that the quality of service and knowledge cannot be matched.

That is what being a property lawyer is all about. Put simply, we just have to be better than our competitors.

That is where we hope this conference comes into play; a conference which should equip you with the knowledge and skills to ensure that, in line with the theme of this programme, you are keeping ahead.

A handwritten signature in black ink, consisting of a large, stylized initial 'C' followed by a long, horizontal, slightly wavy line.

Chris Moore
Partner, Meredith Connell
Auckland